

## WSEAS-NAUN Conference Guide

### Conference Location:



**Boston Marriott Cambridge\*\*\*\***  
**Two Cambridge Center, 50 Broadway**  
**Cambridge, MA 02142 USA**  
**Tel: +1-617-494-6600**  
**Fax: +1-617-494-0036**

**URL:** <http://www.marriott.com/hotels/travel/boscb-boston-marriott-cambridge/>

## How to get to Cambridge MA

### By Air:

Boston Logan International Airport is located in the East Boston neighborhood of Boston, Massachusetts, US. It covers 2,384 acres (965 ha), has six runways, and employs an estimated 16,000 people. The largest airport in New England, as of 2010, Logan is the 19th busiest airport in the United States with about 13.5 million boarding's a year and 28 million passengers overall in 2011.

### Visa:

Before you start planning your travel to USA you should visit US Department of State web page to see if you need to get a visa.

For more details: <http://www.state.gov/m/a/dir/forms/visa/index.htm>

Logan International Airport in Boston

Tel.: 1-800-23-LOGAN (56426)

Daily: 7:00 a.m. - 11:45 p.m.

URL: <http://www.massport.com/logan-airport/Pages/Default.aspx>

## How to get to the Hotel

### By Car:

Follow signs at the airport to the Sumner Tunnel. Pay the toll and take the Sumner Tunnel to Interstate 93 North. You will see a sign for Interstate 93 North at the end of the tunnel. Take 93 North to Exit 26 and follow the signs to Storrow Drive. Keep left to take the RT-28 N ramp toward Leverett Cir/North Station. Continue to stay left to take the RT-28 N ramp toward Cambridge. Turn right onto Leverett Cir. Stay straight to go onto RT-28 N/Monsignor Obrien Hwy. Turn left onto Edwin H Land Blvd/Commercial Ave (Edwin H. Land BLVD is just past Museum Way). In approximately 0.4 miles turn right onto Binney St. Follow Binney St. for about 1 mile then turn left onto Broadway. The hotel is on the right after the first set of traffic lights..

### Car Hire:

You can rent a car from the airport. You will find the following car rental companies in the arrivals hall.

**Alamo - Tel:** +16175614100

**Avis – Tel:** +16175613500

**Budget – Tel:** +16174973733

**Advantage Rent A Car - Tel:** +16175674140

For more options: <http://www.massport.com/logan-airport/inside-airport/Pages/RentalCarsatLogan.aspx>

### By taxi

Taxis are immediately available to arriving passengers in the area in front of the Boston Logan International Airport terminal.

Estimated taxi fare: 30 USD (one way)

For more details about taxis fares:

<http://www.cambridgema.gov/license/Hackney.aspx>

## By public transportation

### From Logan Airport

- Pick up the complimentary airport shuttle outside each terminal's baggage claim area. Be sure to take the shuttle that stops at the 'T' station.
- Take the Blue Line inbound to Government Center.
- At Government Center, change to the Green Line. Take the Green Line one stop to Park Street.
- At Park Street, change to the Red Line Inbound towards Alewife. Depart at Harvard Station and follow the directions below.

### From Downtown Boston/South Station

- Take the Red Line Inbound towards Alewife. Depart at Harvard Station.
- Take the main set of escalators out of the station concourse.
- At the top of the escalators, turn 180° and walk down Massachusetts Avenue (you will pass Au Bon Pain and Cambridge Savings Bank on your right; the campus of Harvard University will be on your left). We are located four blocks down Massachusetts Avenue on the left hand side. Our address is 1201 Massachusetts Avenue.

### Harvard Square MBTA Station

#### 36 JFK Street, Cambridge, MA (0.4 miles/ 6 minutes)

- Leave the main exit of the Harvard Red Line MBTA stop by exiting up the set of double escalators.
- Upon exiting, make a left at the top of the escalators so that you are facing Cambridge Savings Bank with the 'In Town News' stand behind you.
- Walk towards the Savings Bank and make a left on the sidewalk to follow Massachusetts Avenue out of the square.
- (The first street you will cross over is Dunster Street)
- You will continue down Massachusetts Avenue until cross over Bow Street's cross walk.
- After crossing over Bow Street, use the cross walk and make a left across Massachusetts Avenue.
- At the side walk, make a left to continue down Massachusetts Avenue.
- The Hotel's main entrance will be on your left down the driveway and through the rotating doors.

## Subway in Cambridge MA

The T subway system comprises the Blue, Orange, Green, Red, and even part of the Silver Line. Riders can travel anywhere on the system in any direction for the same low fare.

### Buying a ticket - Types of ticket

Day/Week LinkPass: \$11.00 for 1 day \$18.00 for 7 days

Seniors and Persons with Disabilities: \$1.00/ride, \$28/month

Children 11 years old and under: Free

For more information: [http://www.mbta.com/fares\\_and\\_passes/subway/](http://www.mbta.com/fares_and_passes/subway/)

## Bus in Cambridge MA

The T Bus system comprises Local, Inner Express, Outer Express Buses, and part of the Silver Line.

### Buying a ticket - Types of ticket

Cash-on-board: **\$2.00**, **\$4.50** Inner Express, **\$6.50** Outer Express

Day / Week LinkPass: **\$11.00** for 1 day **\$18.00** for 7 days

Seniors and Persons with Disabilities: **\$.75/ride**, **\$28/month** for 7-day validity,

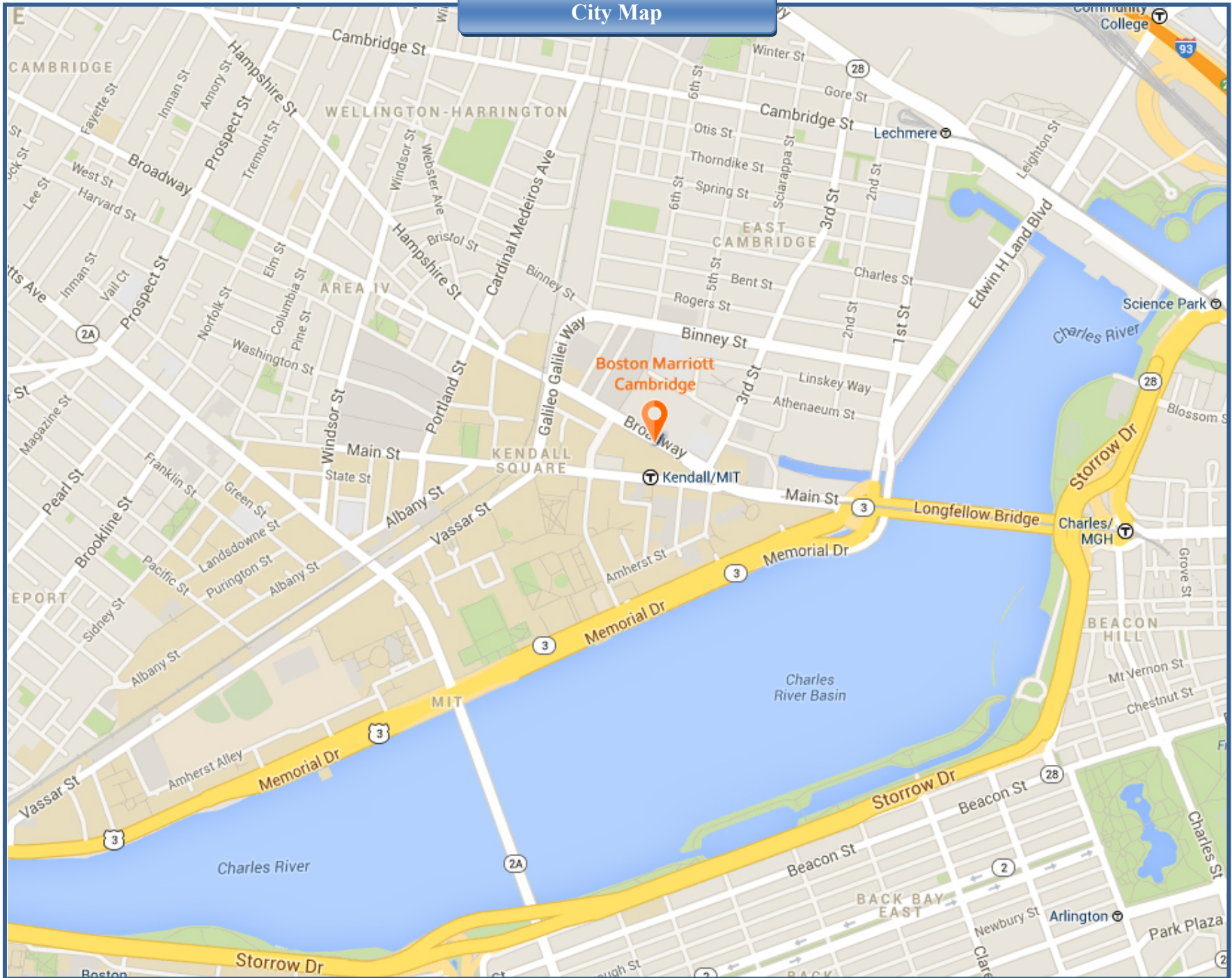
**\$2.25** Inner Express

**\$3.25** Outer Express

Children 11 years old and under: Free

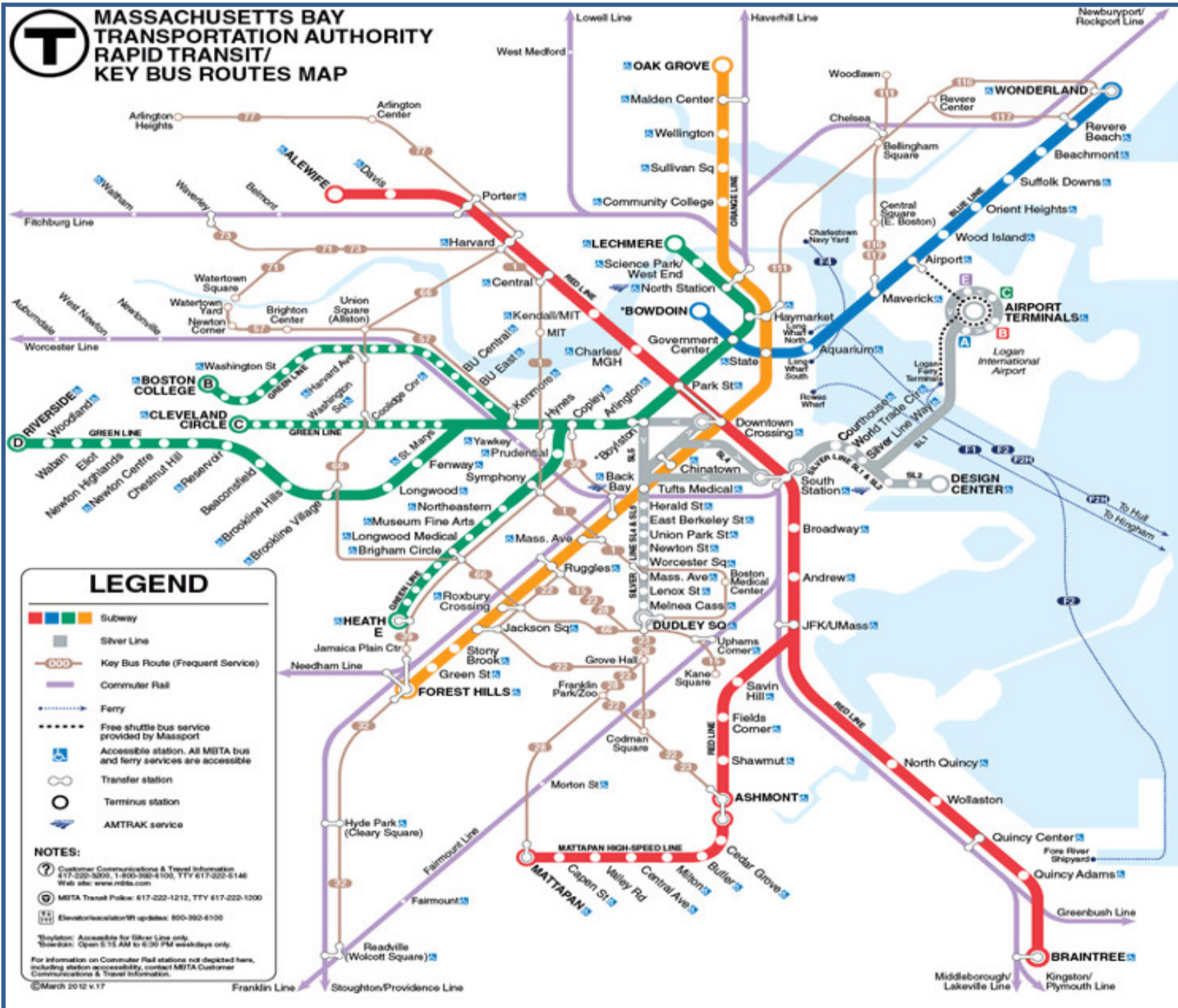
For more information: [http://www.mbta.com/fares\\_and\\_passes/bus/](http://www.mbta.com/fares_and_passes/bus/)

# City Map





# MASSACHUSETTS BAY TRANSPORTATION AUTHORITY RAPID TRANSIT/ KEY BUS ROUTES MAP



### LEGEND

- █ █ █ █ █ Subway
- █ Silver Line
- Key Bus Route (Frequent Service)
- Commuter Rail
- Ferry
- - - Free shuttle bus service provided by Massport
- ♿ Accessible station. All MBTA bus and ferry services are accessible
- ∞ Transfer station
- Terminus station
- ✈ AMTRAK service

**NOTES:**

- ? Customer Communications & Travel Information: 617-222-3200, 1-800-393-4100, TTY 617-222-6148. Web site: www.mbta.com
- Ⓜ MBTA Transit Police: 617-222-1212, TTY 617-222-1200
- Ⓢ Elevator/accessibility updates: 800-392-6100

\*Stoytion: Accessible for Silver Line only.  
\*Lowell: Open 5:15 AM to 6:30 PM weekdays only.

For information on Commuter Rail stations not depicted here, including station accessibility, contact MBTA Customer Communications & Travel Information.

©March 2012 v.17

## Cambridge MA

**Location:** 42°22'25"N 71°06'38"W

**Population:** 105,162

**Area:** 18.47 km<sup>2</sup>

**History:** In 1630, a fleet of 11 ships carrying 700 passengers, set sail from England, bound for the Massachusetts Bay Colony. This dedicated band of Puritans hoped to build their community around a purer, more Biblical church. The newcomers settled several villages around Massachusetts Bay, but could not agree on a capital. Seeking a protected site, John Winthrop and his assistants chose a small hill on the north bank of the Charles River, at the entrance to a small creek, 5 miles upstream from Boston. The Charles was deep enough to accommodate the era's large ships, yet the passage was treacherous for those unfamiliar with the narrow channel. Later, a "pallysadoe," a series of stockade fences and a trench, was built around the town. Newtowne, as Cambridge was known until 1638, was laid out in an orderly grid of streets, bounded today by Eliot Square and Linden Street, Massachusetts Avenue and the River. Each family owned a house lot in the village, planting fields outside, and a share in the common land. Boston was eight long miles away: a ferry at the foot of JFK Street carried passengers over the river to a path -- now North Harvard Street -- that led through Brookline and Roxbury, eventually traversing the spit of land that is now Washington Street. Until the Great Bridge was built in 1660-62, this was the *only* way to Boston, except via the ferry from Charlestown. Soon, Newtowne had a meetinghouse, a school, and a marketplace (Winthrop Square). Harvard College, one of the first colleges in America, was founded in 1636, to train young men for the ministry and for positions of leadership within the godly community.

By the time of the American Revolution, Cambridge was a quiet New England farming village clustered near the Common and the College. The majority of residents were descendants of the original Puritans -- farmers, artisans, and tradesmen, whose lives focused on Cambridge. Distinctly different were a small group of Anglicans -- barely a dozen households -- who lived apart from village affairs, relied on outside incomes, and entertained lavishly in grand homes along Tory Row (now Brattle Street). The Tories' houses and their church, Christ Church, still survive. East Cambridge was opened for development in 1809, when the Canal Bridge, adjacent to the present Museum of Science, was completed. The area was the city's major industrial center until the 1880s. Furniture and glass factories were among the industries attracted to East Cambridge by cheap land, water transportation, and close proximity to Boston. Andrew Craigie, a leading Cambridge speculator, lured the Middlesex County courthouse and jail to East Cambridge by offering to donate new buildings in 1813. In 1841, social activist Dorothea Dix was outraged by conditions in the jail and began her pioneering work in prison reform. Around the turn of the twentieth century, immigrants from Italy, Poland, and Portugal began to arrive in the city, settling primarily in Cambridge port and East Cambridge. French Canadians and Russian Jews came at this time, as well, settling in North Cambridge and Cambridge port, respectively. Today, Cambridge is home to a culturally diverse population of over 105,162. Over fifty languages may be heard on the streets of the city, including Spanish, Creole, Portuguese, Chinese, Amharic, and Korean. Children from 82 different countries of origin attend the public schools.





College students from around the world study at Harvard, Radcliffe, the Massachusetts Institute of Technology, and Lesley College. The heavy industries of the nineteenth and early twentieth century's have been replaced by technology-based enterprises, including electronics, self-developing film and cameras, software and biotechnology research.

**Official Web Page of Cambridge:** <http://www.cambridge-usa.org/>

**Tourist Office**  
**4 Brattle St. (Harvard Sq.)**  
**Tel: +1 617-441-2884**  
**Monday – Saturday: 09:00 - 17:00**  
**Sunday 13:00 – 17:00**  
**Web: <http://www.cambridge-usa.org/>**

Source: <http://www2.cambridgema.gov/Historic/cambridgehistory.html>

**The Conference Banquet will be held on January 30<sup>th</sup> 2014 @ Boston Marriott Cambridge**

**Hotel:** Boston Marriott Cambridge

**Address:** Two Cambridge Center, 50 Broadway, Cambridge, MA 02142 USA

**Ph.:** +1-617-494-6600

**Web Page:** <http://www.marriott.com/hotels/travel/boscb-boston-marriott-cambridge/>

**Time:** According to the program.



## Information



### Weather

The climate of Massachusetts is a humid continental climate, with warm summers and cold, snowy winters. Cambridge, MA, gets 45 inches of rain per year. The US average is 37. Snowfall is 48 inches. The average US city gets 25 inches of snow per year. The number of days with any measurable precipitation is 120.



### Time

Eastern Standard Time zone: UTC/GMT -5 HOURS



### Banks

Most banks in Massachusetts open Monday to Wednesday 09:00 – 16:00, Thursday – Friday 09:00 – 17:00, Saturday 09:00 – 13:00, Sunday: Closed



### Post Office

Most post offices are open Monday to Friday 07:30 am – 18:00 pm and Saturday from 07:30 am – 15:00 pm  
More information: <http://www.usps.com>



### Shopping

The majority of shops are open all day from 09:30 to 13:00 and 15:00 – 19:30 Monday to Saturday. Sundays and public holidays are the usual closing days, although there are some exceptions.



### Electricity

In North America, power is supplied at 110-120 volts and alternates at 60Hz. Except for microwave ovens, clocks and products with sensitive timing mechanisms, most North American devices can operate at either 50 or 60Hz.



### Special Needs

Delegates and accompanying persons with disabilities are invited to advise the Congress Secretariat of any special requirements or they can call at the Cambridge Commission for Persons with Disabilities (CCPD), Tel: +1 6173496297, Fax: +1 6173494766



### Pharmacy

Many drug stores are open 24h a day.

For more information: [http://www.yelp.com/search?find\\_desc=24+Hour+Pharmacy&find\\_loc=Cambridge%2C+MA](http://www.yelp.com/search?find_desc=24+Hour+Pharmacy&find_loc=Cambridge%2C+MA)



### Currency

The unit of US currency is Dollar (\$). Major credit cards are accepted in most hotels, shops and restaurants.

Travelers' cheques and currency can be changed at exchange bureaus.

## Place of Interest in Cambridge MA

### Harvard Art Museums

The Harvard Art Museums, among the world's leading art institutions, comprise three museums (Fogg, Busch-Reisinger, and Arthur M. Sackler) and four research centers (Straus Center for Conservation and Technical Studies, the Center for the Technical Study of Modern Art, the Harvard Art Museums Archives, and the Archaeological Exploration of Sardis). The Harvard Art Museums are distinguished by the range and depth of their collections, their groundbreaking exhibitions, and the original research of their staff. The collections include approximately 250,000 objects in all media, ranging in date from antiquity to the present and originating in Europe, North America, North Africa, the Middle East, South Asia, East Asia, and Southeast Asia. Integral to Harvard University and the wider community, the art museums and research centers serve as resources for students, scholars, and other visitors. For more than a century they have been the nation's premier training ground for museum professionals and are renowned for their seminal role in developing the discipline of art history in this country.

**Address:** 32 Quincy Street, Cambridge, MA 02138

**Opening hours:** Tuesday-Saturday, 10:00am-5:00pm.

Closed on Sundays, Mondays, and some national holidays

Thursday, Saturday and Sunday: 10:00 - 18:30pm

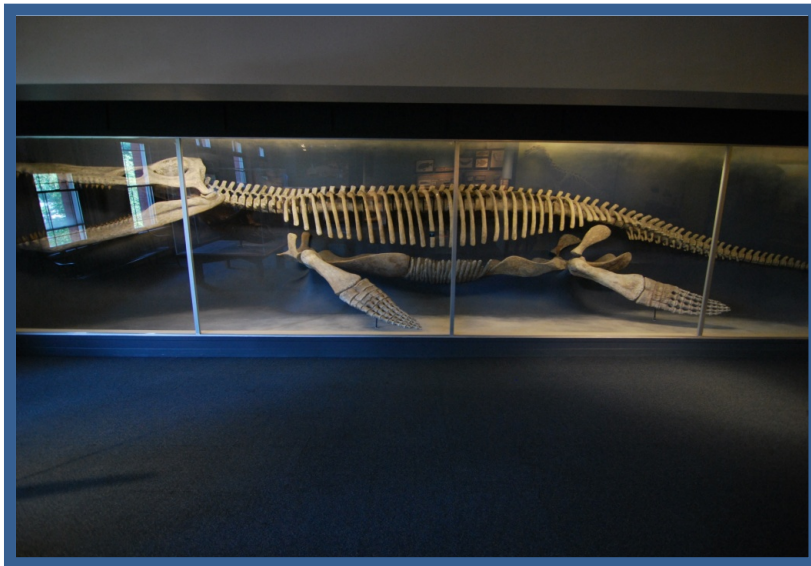
**Tel.:** + 16174959400

**Admission:** Paid admission includes entrance to the museum, docent tours, and gallery talks. \$9 adults, \$7 seniors over 65, \$6 college students with valid ID. Admission is free for Harvard University ID holders, Members of the Harvard Art Museum, Cambridge Public Library cardholders, and visitors under 18 years of age. Free on Saturdays before noon for Massachusetts residents with valid ID.

For more details about the fees you can visit the official site:

**URL:** <http://www.harvardartmuseums.org/>





## Harvard Museum of Natural History

Explore 12,000 specimens drawn from Harvard's vast research collections at the University's most visited museum -- dinosaurs, meteorites, gemstones, and hundreds of animals around the globe. Get close to the world's only mounted Kronosaurus, a 42 ft-long marine reptile; one of the first Triceratops ever discovered; a 1,642 lb. amethyst geode; whale skeletons. Don't miss the world famous exhibit of 3,000 'Glass Flowers', amazingly realistic models of plants, fruits and flowers created by father-son glass artists Leopold and Rudolph Blaschka from 1886-1936. You won't believe they're not real.

**Address:** 26 Oxford Street, Cambridge, MA 02138

**Opening hours:** Open daily, 9:00 am to 5:00 pm.

Closed Thanksgiving, Christmas Eve Day,

Christmas Day and New Year's Day.

**Tel.:** + 1 6174953045

**Admission:** Seniors: \$12.00

Students: \$10.00

Children ages 3-18: \$8.00

Under 3: free.

Free for Massachusetts residents only: Wednesdays 3:00-5:00 pm  
(September - May) and Sunday mornings year round 09:00 -noon.

Ticket includes admission to the adjacent Peabody Museum.

For more details about the fees you can visit the official site:

**URL:** <http://www.harvardartmuseums.org/>

## MIT Museum

The newly renovated galleries and exhibitions located in the heart of Cambridge on the north edge of the MIT campus, make the MIT Museum an exciting place to visit. Permanent exhibitions include Robots and Beyond, Holography, the Light Fantastic and Gestural Engineering: The Sculpture of Arthur Ganson, and displays from the Polaroid Collection as well as some of the most recent cutting edge research from labs across MIT. Interesting programs and public events for all ages, including the Cambridge Science Festival are featured on the website.

**Address:** 265 Massachusetts Avenue, Cambridge MA

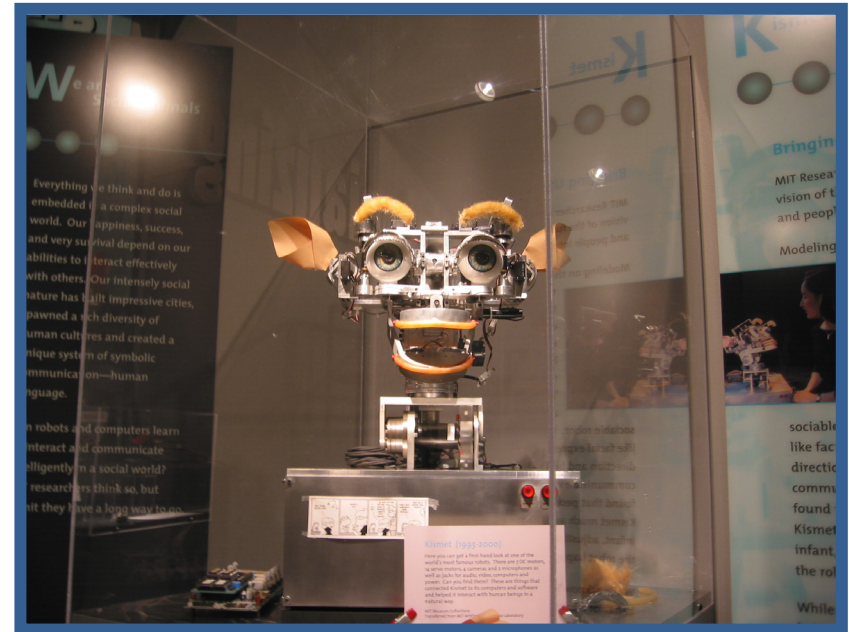
**Opening hours and admissions:** Free admission Sundays from 10:00 a.m. - noon, and the second Friday evening of each month (17:00 - 20:00)

Additional galleries managed by the Museum are on the MIT campus, and are free to the public - the Hart Nautical Gallery and the Compton Gallery

**Tel.:** +1 6172535927

For more details about the fees you can visit the official site:

**URL:** <http://web.mit.edu/museum/>



## Carpenter Center for the Visual Arts

The Carpenter Center, on the east side of Quincy street between the Faculty Club and the Fogg Art Museum, is the only building on the North American continent designed by the famous French architect Le Corbusier. Despite the controversy over the wisdom of placing a building of such modern design in a traditional location, Le Corbusier felt that a building devoted to the visual arts must be an experience of freedom and unbound creativity.

**Address:** 24 Quincy Street, Cambridge MA

**Opening hours:** Monday – Saturday 09:00 – 23:00, Sunday 12:00 – 23:00

**Sert Gallery:** Tuesday – Sunday 13:00 – 17:00

For more details about the fees you can visit the official site:

**URL:** <http://hcl.harvard.edu/hfa/>

## Central Square Theater

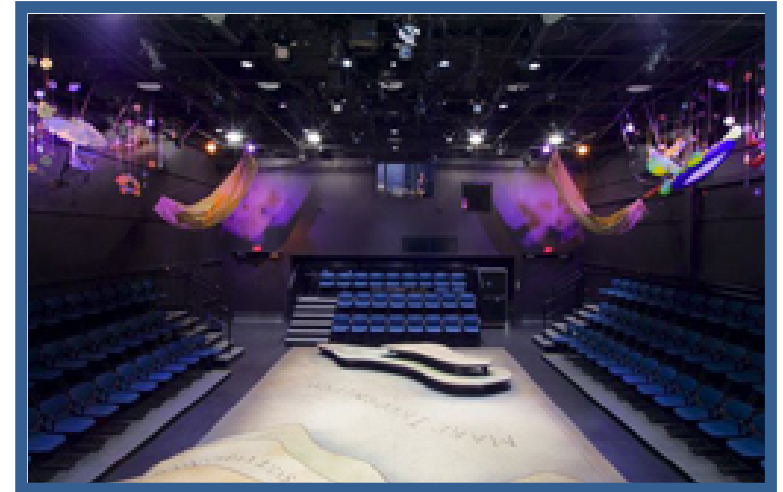
Central Square Theater is a new state-of-the-art theatrical arts center, which opened in 2008. Audiences will find, under one roof, the distinctive repertoires of these two award-winning non-profit professional companies, The Nora Theatre Company and Underground Railway Theater, as well as collaborative projects drawing on their creative synergy. You can buy your ticket on line: <https://web.ovationtix.com/trs/cal/2462>

**Address:** 450 Massachusetts Avenue, Cambridge MA

**Tel:** + 1 6178351611

For more details about the fees you can visit:

**URL:** <http://www.centralsquaretheater.org/>



## Club Passim

As the premier venue for folk, roots and acoustic artists, Club Passim is celebrating 45 years in Harvard Square. This non-profit organization offers nightly shows and educational programming. Performances are 7 nights a week.

**Address:** 47 Palmer Street, Cambridge MA

**Opening hours:** Daily: 11:00 – 23:00

**Tel:** +1 6174925300

For more details about the fees you can visit the official site:

**URL:** <http://hcl.harvard.edu/hfa/>



## Dance Complex

The Dance Complex is the artist-run center for the movement arts in Cambridge. An omni-cultural community offering concerts, classes and rehearsal space in the historic Odd Fellows Hall.

**Address:** 536 Massachusetts Avenue, Cambridge MA

**Opening hours:** Depends on the event program

**Tel:** +1 6175479363

**Fees:** Depends on the event program or the kind of performance

For more information:

**URL:** [http://www.dancecomplex.org/Performances\\_at\\_the\\_Dance\\_Complex.htm](http://www.dancecomplex.org/Performances_at_the_Dance_Complex.htm)



## Maud Morgan Visual Arts Center

It is a visual arts center for children and practicing artists with workspace and studios for painting, drawing, printing, three-dimensional work and ceramics. The Center is named to honor Maud Morgan, who died in 1999 at the age of 96, and symbolized for many - optimism, resilience and generosity of spirit. As an artist she experimented with new media into her 90's, and as an individual she reached out to and encouraged hundreds of younger artists.

**Address:** 20 Sacramento Street, Cambridge MA

**Opening hours:** Depends on the exhibition

**Tel:** +1 6175471647

**Fees:** Depends on the exhibition

For more information:

**URL:** <http://maudmorgan.com/aboutus.htm>

## More places to visit



### **Longfellow House - Washington's Headquarters National Historic Site**

Built in 1759, this house served as George Washington's headquarters (1775-1776), and home to the poet Henry Wadsworth Longfellow (1837-1882). During the nineteenth century, it was a gathering place for artists and writers, and today features original furnishings and art work from around the world.

**Address:** 105 Brattle Street, Cambridge MA

**Opening hours:** Wednesday – Sunday: 0 9:30 - 16:30

Free 45 minute guided house tour are offered at 10:00, 11:00, 12:00 PM, 13:00, 14:00, 15:00 and 16:00

**Fees:** Entrance to the Longfellow House - Washington's Headquarters NHS Visitor Center and Bookstore, and gardens and grounds is free.

**Tel:** +1 6178764491

For more information:

**URL:** <http://www.nps.gov/long/planyourvisit/index.htm>

### **Memorial Hall**

Expansive stained glass windows and marble tablets pay tribute to those Harvard associates who fell on behalf of the Union during the Civil War. Call for viewing hours.

**Address:** 45 Quincy Street, Cambridge MA

**Opening hours:** Weekends: 10:00 - 18:00

**Conditions:** Typically, visitors may gain access to the transept on weekdays from 10:00 until 18:00

**Tel:** +1 6174964595

For more information:

**URL:** <http://www.fas.harvard.edu/~memhall/visitaacs.html>





### Cambridge Historical Tours

Historical, Hysterical Harvard: Explore the rich history of Cambridge and Harvard as we stroll! The full tour includes the most Famous sites in Cambridge, such as Harvard Yard, Cambridge Burial Ground, the Cambridge Common (birthplace of the American Army), and the Henry Wadsworth Longfellow House, as well as the lesser known, but equally fascinating Winthrop Square, John Hicks House, Charles River Residences, the former Gold Coast, BOTH First Churches of Cambridge, and more!

**Address:** 25 Mt Auburn St, Cambridge MA

**Tour hours:** Please contact at the above telephone number

**Tel:** +1 6175204030

For more information:

**URL:** <http://cambridgehistoricaltours.org/>

### City wine tours

Learn about great wine - and historic Harvard Square - on this two-hour walking and tasting tour! Led by experienced wine experts, the tour blends wine education and neighborhood exploration. You can choose among 4 wine tours: 1. Harvard Square wine tour, 2. South End, 3. Back Bay and 4. North End.

**Address:** 25 Mt Auburn St, Cambridge MA

**Tickets:** Buy online @ <http://www.citywinetours.com/home/>  
or you can call at the telephone number below.

**Price:** From 55\$

**Tel:** +1 8554558747

For more information: <http://cambridgehistoricaltours.org/>





### **Free tours on foot**

Tour covers Harvard Square, Cambridge Common, Christ Church, Tory Row, Longfellow House, and more!

**Price:** Free

Book a free tour @ [https://citybyfoot.checkfront.com/reserve/?category\\_id=6](https://citybyfoot.checkfront.com/reserve/?category_id=6)

**Email:** [info@freetoursbyfoot.com](mailto:info@freetoursbyfoot.com)

**Tel:** +1 6173409545

For more information:

URL: <http://www.freetoursbyfoot.com/boston/>

More tours in Cambridge MA:

<http://www.harvardtour.com/home/>

[www.tinyurl.com/357a5t](http://www.tinyurl.com/357a5t)

<http://www.runboston.org/>

<http://www.bostonsupertrolleytours.com/>

<http://www.bostonsupertrolleytours.com/>

<http://www.harvard.edu/visitors/>

## Dinning in Cambridge MA

The cuisine of the United States refers to food preparation originating from the United States of America. European colonization of the Americas yielded the introduction of a number of ingredients and cooking styles to the latter. The various styles continued expanding well into the 19th and 20th centuries, proportional to the influx of immigrants from many foreign nations; such influx developed a rich diversity in food preparation throughout the country.

Source: [http://en.wikipedia.org/wiki/Cuisine\\_of\\_the\\_United\\_States](http://en.wikipedia.org/wiki/Cuisine_of_the_United_States)



### Harvard House of Pizza

The menu consists of foods ranging from pizza, pasta and calzones, to salads, subs and wraps. All our dough and sauce are made fresh on the premises every single day!

**Address:** 1706 Massachusetts Avenue, Cambridge MA

**Opening hours:** 11:00am – 12:00pm

**Tel:** +1 6178648090

**URL:** <http://www.harvardhouseofpizza.com/>

### Spirit Bar

Classy and casual, enjoy tastes from around the world as well as authentic American with an emphasis on quality.

**Address:** 2046 Massachusetts Avenue, Cambridge MA

**Opening hours:** Monday, Tuesday, and Wednesday: 14:30 -01:00  
Thursday, Friday: 13:30 – 02:00

**Tel:** +1 6178681555

**URL:** <http://www.thespiritbars.com/>





### **Tavern in the Square II**

The Tavern is a classic American neighborhood bar and grill serving delicious American cuisine in a friendly, fun and casual atmosphere.

**Address:** 1815 Massachusetts Avenue, Cambridge MA

**Tel:** +1 6173547766

**URL:** <http://www.taverninthesquare.com/>

### **West side lounge**

West Side Lounge is an intimate neighborhood bistro with a lively bar scene, West Side received Boston Magazine's "Best of Boston" award for Best Neighborhood Restaurant in 2003 and 2004, and Best Bar Food in 2002.

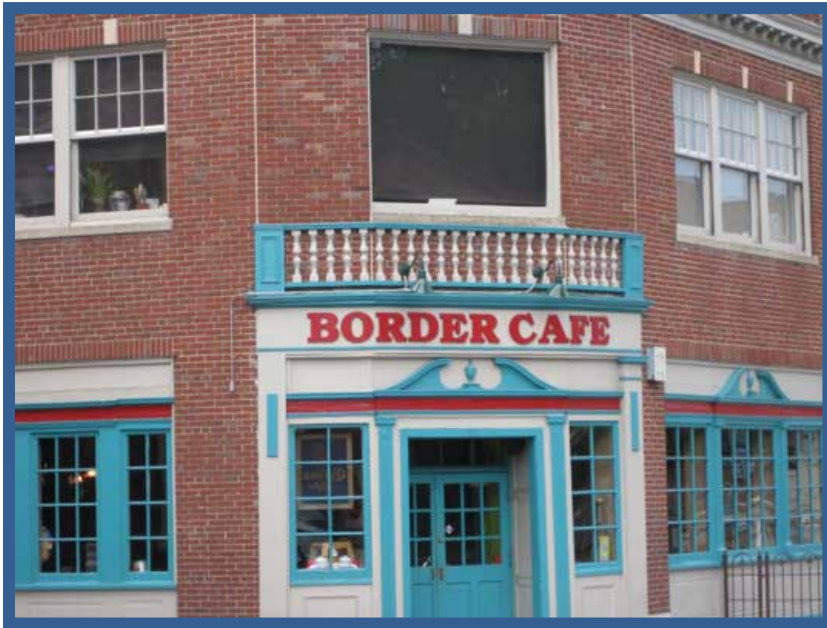
**Address:** 1680 Massachusetts Avenue, Cambridge MA

**Opening hours:** Daily: Menu until 23:30, drinks until 01:00

**Tel:** +1 6174415566

**URL:** <http://www.thespiritbars.com/>





## **Border Café**

The Border Cafe food is honest and unique, the service is casual yet professional and the atmosphere is fun and friendly. Border serves high quality Mexican and Cajun food at a great price with all items made in-house.

**Address:** 32 Church Street, Cambridge MA

**Opening hours:** Monday - Thursday: 11:00 – 01:00

Friday – Saturday: 11:00 – 02:00

Sunday: 12:00PM – 12:00 AM

**Tel:** +1 6178646100

**URL:** <http://www.bordercafe.com/>

[More options to dine in Cambridge MA](#)

<http://www.9taste.com/>

<http://www.theinnatharvard.com/dining.html>

<http://www.bgood.com/>

<http://www.benjerry.com/harvardsquare>

Sources:

<http://www.state.gov/m/a/dir/forms/visa/index.htm>  
<http://www.massport.com/logan-airport/Pages/Default.aspx>  
<http://www.massport.com/logan-airport/inside-airport/Pages/RentalCarsatLogan.aspx>  
<http://www.cambridgema.gov/license/Hackney.aspx>  
[http://www.mbta.com/fares\\_and\\_passes/subway/](http://www.mbta.com/fares_and_passes/subway/)  
[http://www.mbta.com/fares\\_and\\_passes/bus/](http://www.mbta.com/fares_and_passes/bus/)  
<http://www.cambridge-usa.org/>  
<http://www2.cambridgema.gov/Historic/cambridgehistory.html>  
<http://www.marriott.com/hotels/travel/boscb-boston-marriott-cambridge/>  
<http://www.usps.com>  
[http://www.yelp.com/search?find\\_desc=24+Hour+Pharmacy&find\\_loc=Cambridge%2C+MA](http://www.yelp.com/search?find_desc=24+Hour+Pharmacy&find_loc=Cambridge%2C+MA)  
<http://www.harvardartmuseums.org/>  
<http://www.harvardartmuseums.org/>  
<http://web.mit.edu/museum/>  
<http://hcl.harvard.edu/hfa/>  
<https://web.ovationtix.com/trs/cal/2462>  
<http://www.centralsquaretheater.org/>  
<http://hcl.harvard.edu/hfa/>  
[http://www.dancecomplex.org/Performances\\_at\\_the\\_Dance\\_Complex.htm](http://www.dancecomplex.org/Performances_at_the_Dance_Complex.htm)  
<http://maudmorgan.com/aboutus.htm>  
<http://www.nps.gov/long/planyourvisit/index.htm>  
<http://www.fas.harvard.edu/~memhall/visitaacs.html>  
<http://cambridgehistoricaltours.org/>  
<http://www.citywinetours.com/home/>  
<http://cambridgehistoricaltours.org/>  
[https://citybyfoot.checkfront.com/reserve/?category\\_id=6](https://citybyfoot.checkfront.com/reserve/?category_id=6)  
<http://www.freetoursbyfoot.com/boston/>  
<http://www.harvardtour.com/home/>  
<http://web.mit.edu/institute-events/events/>  
<http://www.runboston.org/>  
<http://www.bostonsupertrolleytours.com/>  
<http://www.bostonsupertrolleytours.com/>  
<http://www.harvard.edu/visitors/>  
[http://en.wikipedia.org/wiki/Cuisine\\_of\\_the\\_United\\_States](http://en.wikipedia.org/wiki/Cuisine_of_the_United_States)  
<http://www.harvardhouseofpizza.com/>  
<http://www.thespiritbars.com/>  
<http://www.taverninthesquare.com/>  
<http://www.thespiritbars.com/>  
<http://www.bordercafe.com/>  
<http://www.9taste.com/>  
<http://www.theinnatharvard.com/dining.html>  
<http://www.bgood.com/>  
<http://www.benjerry.com/harvardsquare>